

ROCKARMOR

INSTALLATION GUIDE



VEHICLE:

- NISSAN PATROL GU1,2,3 SERIES

ROCKARMOR

INSTALLATION GUIDE

PLEASE READ THE FITTING INSTRUCTIONS CAREFULLY

RECOMMENDATIONS:

- Having a second person present to help with fitting the bar
- Do not dispose of any spare washers and bolts
- Take care when unwrapping, do not use knife on bar as it will mark the powder coat
- Cable tie all wires to the back of the bar when mounting in order for it to be out of the way
- Use a Qualified Auto Electrician when wiring the lights to the vehicle. (Wiring Looms Not included)
- **POWDER COATING** - Fit the bar to insure all parts align correctly prior to powder coating the bull bar
- Regular maintenance may be required, cleaning the bar will ensure longevity. Washing the bar after beach driving is highly recommended. If powder coating is scratched off we recommend painting the defected area to prevent rust.

NOTE:

- Measure cut out before you start cutting .
- Do not dispose of genuine/original nuts and bolts as they are required.
- You may notice that there are a few spare washers and bolts, please do not dispose of the spares you may require spares later.
- Use flat washer and spring for every nut and bolt
- We Recommend that u use lock tight on all nuts and bolts .
- Insure all parts are accounted for prior to beginning the fitment.
- This item does not include the wiring loom, we recommend you use a qualified auto electrician to wire up your lights.

Fitting Instructions - Bullbar

STAGE ONE – PREPARING VEHICLE AND FITTING THE FRONT BAR

- Remove the existing front factory bar from the vehicle.

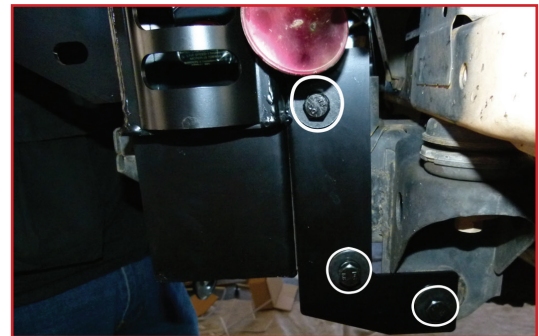


- Unwrap your new Powerful 4x4 Bullbar – please take care when doing so in order to avoid marking the powder coat when unwrapping.



STAGE TWO – MOUNTING THE BAR ONTO THE VEHICLE

- Place The mounting winch bracket on the vehicle. Align the mounting holes on the side of chassis with bracket.



- When tow hitch is used, place the tow hitch on the same point as the bracket on the vehicle, if you are not using the tow hitch, skip this step (Tow hitch is an optional extra).



Fitting Instructions - Bullbar

- Bolt Up all nuts using genuine nuts from the vehicle Or nuts and bolts provided (do not tighten all the way, keep enough to allow movement) this will be tightened at a later stage.



- Once the bulbar has been unwrapped place the bar on the vehicle resting on the mounting bracket.



- NOTE if you are mounting a winch, this has to be done prior to mounting the bulbar on the bracket.



- Once the bar is on the vehicle, bolt the bulbar to the mounting bracket as seen below, do not tighten. Please note, AC piping may require adjusting in order for the bar to sit correctly.



Fitting Instructions - Bullbar

- Align the bar up with the vehicle. Insert tow hitches make sure they move in and out freely then tighten all the nuts on the mounting bracket and on the vehicle,



- Use protection plate L shaped brackets to mount the protection plates Do not tighten the bolts when placed to mount the protection plates



- If you have purchased the tow hitch option, you can now place it in the bulbar and mount it in the bracket as seen to the right. Use the locking pin and split pin to hold the tow hitch in place. Now tighten all nuts and screws.



Important note

Tow hitch is used for off road use only, generally meant for pushing a trailer/caravan up driveways & the like. Not meant for on road use.

Fitting Instructions - Bullbar

Warranty

1.If any product or part of a product manufactured by Powerful4x4 Pty Ltd is found to be defective during a period of 12 months from date of purchase, Powerful 4x4 Shall repair (at the discretion or Powerful 4x4) the defective product or part.

2.Powerful 4x4 Pty Ltd does not warrant the products manufactured by it comply with the laws of the locality (May differ from State to state) where those products are purchased or used. It is the sole responsibility of the purchaser to ascertain whether products being purchased, or affixation of those products to any other object, comply with the local laws.

3.Except to the extent described in the warranty, Powerful 4x4 shall not be liable for any other claims, including claims arising from incorrect fitment, product or vehicle modification, faulty design, the use of the product on any indirect special or consequential damage or injury to any person, company or other entity.

4.Any Modification or alteration to any product manufactured by powerful 4x4 Pty Ltd to enable fitment in conjunction with other vehicle accessories or modifications will void warranty claims.

Please do not hesitate to contact us if you need any help with fitting of the bar
1300 554 923

FROM EVERYONE AT POWERFUL4X4 WE HOPE YOU ENJOY YOUR NEW PREMIUM SERIES
BULBAR AND WOULD APPRECIATE ANY FEEDBACK AND PHOTOS

PLEASE EMAIL YOUR PHOTOS & FEEDBACK TO

sales@powerful4x4.com.au

UNLESS OTHERWISE REQUESTED, SOME OF YOUR COMMENTS & PHOTOS MAY BE USED
ON OUR WEBSITE OR PRINT MEDIA

PLEASE NOTE: Please check in your local state as to legislation with regards to adding accessories to your vehicle. Some products sold may be for off road use only. This responsibility lies with the owner of the vehicle.