

ROCKARMOR

INSTALLATION GUIDE



Vehicle:

- **Toyota Landcruiser Prado 150 series (2009 – 2013)**

ROCKARMOR

INSTALLATION GUIDE

PLEASE READ THE FITTING INSTRUCTIONS CAREFULLY RECOMMENDATIONS:

- Having a second person present to help with fitting the bar
- Do not dispose of any spare washers and bolts
- Take care when unwrapping, do not use knife on bar as it will mark the powder coat
- Cable tie all wires to the back of the bar when mounting in order for it to be out of the way
- Use a Qualified Auto Electrician when wiring the lights to the vehicle. (Wiring Looms Not included)
- **POWDER COATING** - Fit the bar to insure all parts align correctly prior to powder coating the bull bar
- Regular maintenance may be required, cleaning the bar will ensure longevity. Washing the bar after beach driving is highly recommended. If powder coating is scratched off we recommend painting the defected area to prevent rust.

NOTE:

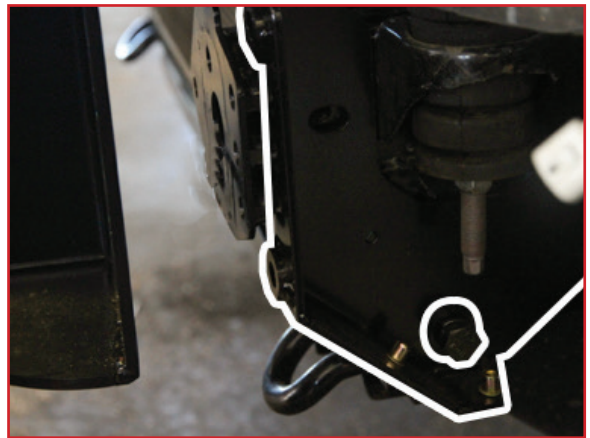
- Measure cut out before you start cutting .
- Do not dispose of genuine/original nuts and bolts as they are required.
- You may notice that there are a few spare washers and bolts, please do not dispose of the spares you may require spares later.
- Use flat washer and spring for every nut and bolt
- We Recommend that u use lock tight on all nuts and bolts .
- Insure all parts are accounted for prior to beginning the fitment.
- This item does not include the wiring loom, we recommend you use a qualified auto electrician to wire up your lights.

Fitting Instructions - Bullabar

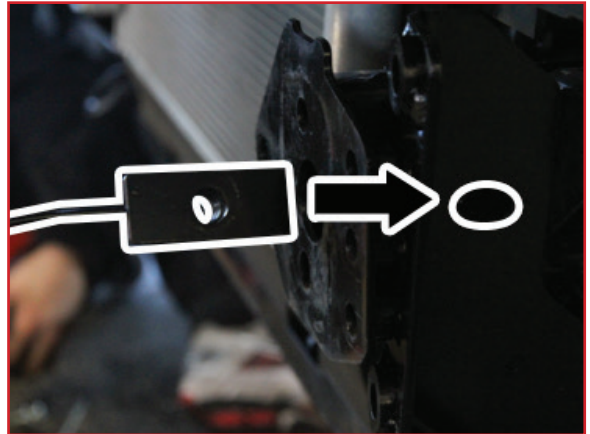
- Remove the existing front bar from the vehicle.
- Unwrap your new Bullbar – please take care when doing so in order to avoid marking the powder coat when unwrapping.



- Place the mounting bracket on the side of the chassis.
- Secure the bracket to the chassis using the mounting points shown in the image.



- Insert the plate with the capture bolt into the front of the chassis then fix into place as shown in the image, and secure it using a bolt.



- When tow hitch is used, place the tow hitch on the same point as the bracket on the vehicle, if you are not using the tow hitch, skip this step (Tow hitch is an optional extra)

Fitting Instructions - Bullbar

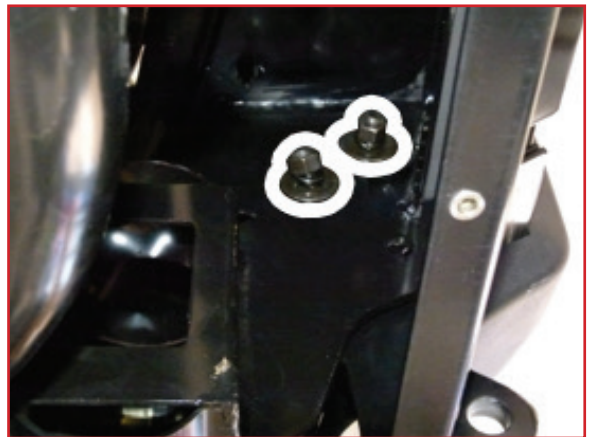
- Mount the winch plate to the bracket



- Once the bulbar has been unwrapped place the bar on the vehicle resting on the mounting bracket – NOTE if you are mounting a winch, this has to be done prior to mounting the bulbar on the bracket.



- Once the bar is on the vehicle, bolt the bulbar to the mounting bracket as seen in the image, do not tighten.

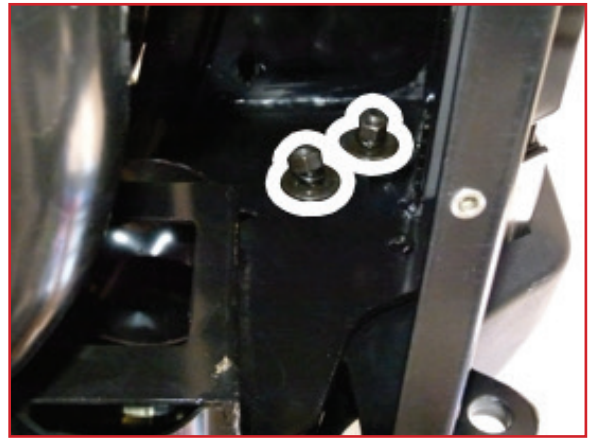


- Now measure the gap between the resting bullbar and the body, cut the vehicles original front bar to size and then remove the bullbar, this may take a few attempts while cutting, once desired shape has been achieved, fit the cut front bar onto the vehicle.
- Double check the measure of the cut before initial cut.



Fitting Instructions - Bullabar

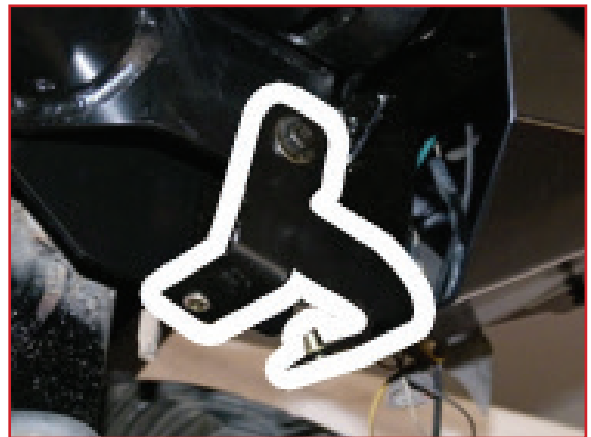
- Place the bar on the vehicle resting on the mounting bracket.
- Once the bar is on the vehicle, bolt the bulbar to the mounting bracket as seen in the image, do not tighten.



- Align the bar up with the vehicle, Insert tow hitches make sure they move in and out freely then tighten all the nuts on the mounting bracket and on the vehicle



- Use protection plate L shaped brackets to mount the protection plates.
- Insert all the bolts to the protection plate before tightening.
- Tighten all bolts



Tow hitch is used for off road use only, generally meant for pushing a trailer/caravan up driveways & the like. Not meant for on road use.

The tow hitch can also be used as a recovery point, mount both tow hitches to either side of the vehicle attach shackles to either side and a bridle/snatch strap and the like.

We highly recommend any front recovery is done in this format as the strain of the recovery is taken from and to the chassis rails.

Snatching is not recommended from the 2 recovery points on the bulbar as this may affect the structural integrity of the bulbar if a heavy recovery is undertaken. The recovery points are rated to 4.7 tonnes.

Fitting Instructions – Bullbar

Warranty

1.If any product or part of a product manufactured by Powerful4x4 Pty Ltd is found to be defective during a period of 12 months from date of purchase, Powerful 4x4 Shall repair (at the discretion of Powerful 4x4) the defective product or part.

2.Powerful 4x4 Pty Ltd does not warrant the products manufactured by it comply with the laws of the locality (May differ from State to state) where those products are purchased or used. It is the sole responsibility of the purchaser to ascertain whether products being purchased, or affixation of those products to any other object, comply with the local laws.

3.Except to the extent described in the warranty, Powerful 4x4 shall not be liable for any other claims, including claims arising from incorrect fitment, product or vehicle modification, faulty design, the use of the product on any indirect special or consequential damage or injury to any person, company or other entity.

4.Any Modification or alteration to any product manufactured by powerful 4x4 Pty Ltd to enable fitment in conjunction with other vehicle accessories or modifications will void warranty claims.

Please do not hesitate to contact us if you need any help with fitting of the bar
1300 554 923

FROM EVERYONE AT POWERFUL4X4 WE HOPE YOU ENJOY YOUR NEW PREMIUM SERIES
BULBAR AND WOULD APPRECIATE ANY FEEDBACK AND PHOTOS

PLEASE EMAIL YOUR PHOTOS & FEEDBACK TO

sales@powerful4x4.com.au

UNLESS OTHERWISE REQUESTED, SOME OF YOUR COMMENTS & PHOTOS MAY BE USED
ON OUR WEBSITE OR PRINT MEDIA

PLEASE NOTE: Please check in your local state as to legislation with regards to adding accessories to your vehicle. Some products sold may be for off road use only. This responsibility lies with the owner of the vehicle.