

# ROCKARMOR

## INSTALLATION GUIDE



### Vehicle:

- Toyota Landcruiser 100 series (1997 – 2007)

# **ROCKARMOR**

## **INSTALLATION GUIDE**

### **PLEASE READ THE FITTING INSTRUCTIONS CAREFULLY RECOMMENDATIONS:**

- Having a second person present to help with fitting the bar
- Do not dispose of any spare washers and bolts
- Take care when unwrapping, do not use knife on bar as it will mark the powder coat
- Cable tie all wires to the back of the bar when mounting in order for it to be out of the way
- Use a Qualified Auto Electrician when wiring the lights to the vehicle. (Wiring Looms Not included)
- **POWDER COATING** - Fit the bar to insure all parts align correctly prior to powder coating the bull bar
- Regular maintenance may be required, cleaning the bar will ensure longevity. Washing the bar after beach driving is highly recommended. If powder coating is scratched off we recommend painting the defected area to prevent rust.

### **NOTE:**

- Measure cut out before you start cutting .
- Do not dispose of genuine/original nuts and bolts as they are required.
- You may notice that there are a few spare washers and bolts, please do not dispose of the spares you may require spares later.
- Use flat washer and spring for every nut and bolt
- We Recommend that u use lock tight on all nuts and bolts .
- Insure all parts are accounted for prior to beginning the fitment.
- This item does not include the wiring loom, we recommend you use a qualified auto electrician to wire up your lights.

# Fitting Instructions - Wheel Carrier

This package contains the following nuts and bolts

Description	Qty
M12 x 1.25 Hub Nut	6
D10 Flat Washer	12
D16 Flat Washer	6
D6 Flat Washer	4
D8 Flat Washer	4
D10 Spring Washer	8
D12 Spring Washer	14
D6 Spring Washer	2
D8 Spring Washer	10
D12 Special Gasket	22
M24 Hex Head Slotted Nut	2
Cotter Pin	2
M10 Hex nut	8
M12 Hex nut	6
M6 Hex nut	2
M8 Hex nut	6
M12 x 1.25 Hex nut	2
M10 x 30mm Hex Head Bolt	4
M12 x 35mm Hex Head Bolt	4
M12 x 50mm Hex Head Bolt	6
M6 x 20mm Hex Head Bolt	2
M8 x 30mm Hex Head Bolt	10
M12 x 1.25 x 50mm Hex Head Bolt	4
M16 x 40mm Hex Head Bolt	6
D8 Flat Gasket	12
M4 x 8mm Cross Recessed Pan Head Screw	2

# Fitting Instructions - Wheel Carrier

- Remove the existing rear bar and support bracket from the vehicle.



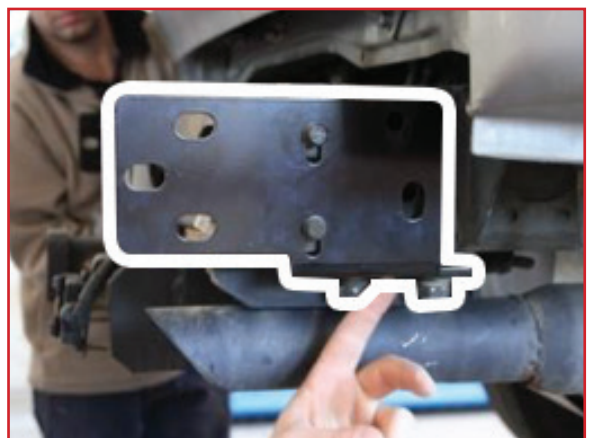
- Fitting the bar does not require you to remove the Tow Bar, however on some vehicles you may be required to unbolt the side mounts of the tow bar which connect to the chassis.



- Unwrap your new RockArmor Dual Wheel Carrier – please take care when doing so in order to avoid marking the powder coat when unwrapping.

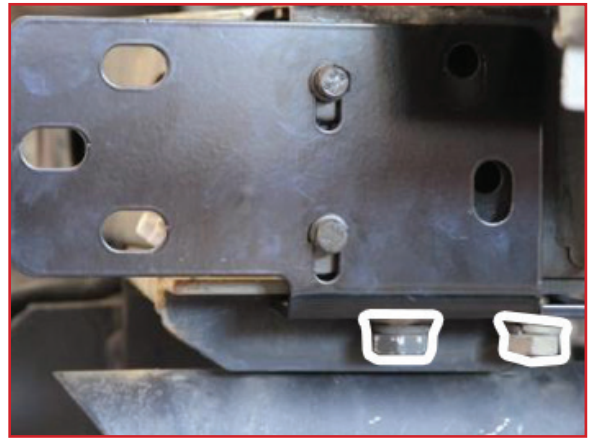


- Place the two side brackets on both side of the chassis as demonstrated in the photo, on some vehicles it may require the bracket to be spaced out slightly from the chassis this is due to different tow bars.



# Fitting Instructions - Wheel Carrier

- Two bolts must be used to on each side of the brackets as well as the two lower tow bar bolts as seen in the image.



- Place the rear bar on the vehicle.



- All bolts should be mounted in on both side brackets once the bar is on the vehicle.



- Place the T Shaped nuts in to the chassis to allow the bolts from the side to fasten.

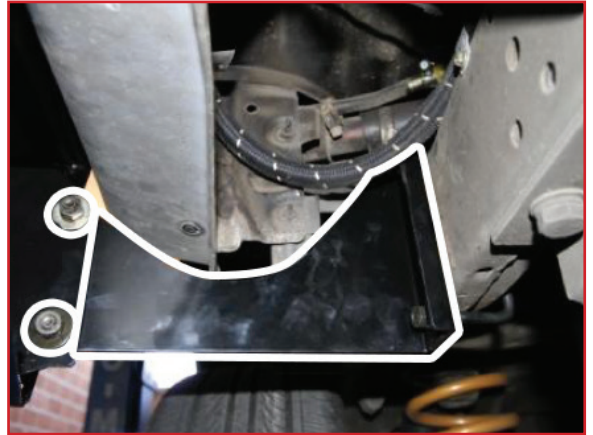


# Fitting Instructions – Wheel Carrier

- Bolt the front mounting points as seen in the image.



- Once all bolts are fastened, use the U shaped bracket and U bolt the bracket to the chassis.



- Place and bolt the checker plate back on the rear bar.
- Once all the bolts are nice and tight, the bar is ready to use.
- Please keep all spares – within the fitting box

# Fitting Instructions - Wheel Carrier

## STAGE TWO - FITTING THE ARMS TO THE REAR BAR

It is easily done in this order:

Large Seal - Large Washer - Large Bearing - Arm - Small Bearing - Small Washer - Nut - Cap

PLEASE NOTE: AS THE BAR IS BRAND NEW, THE LOCKING PIN MAY RECURE WEARING IN AS THE POWEDER COAT IS FRESH, THIS IS ONLY IN SOME CASES

Advise to grease or lubricate locking pins regularly to prevent locking pins from seizing

- Grease all bearings and stub axels
- Place the large rubber seal on stub axel



- Place large washer over rubber seal



- Place large bearing over large spacer
- Please be sure to keep the arm straight and aligned with the bar when tightening the nut, tighten as hard as possible



- The cap secures the nut in place



# Fitting Instructions – Wheel Carrier

- The height of the locking pin can be adjusted to fit properly, please refer to photos.
- The top cap can be tightened to adjust the height if needed



- Once the arm is on, it will lock straight in; the locking bracket can also be adjusted.



- Once the arm is fitted, the goose neck can be placed straight in and mounted with the three bolts and washers provided.
- Once the goose neck is mounted, place the number plate bracket and reverse light on to the goose neck





# Fitting Instructions – Wheel Carrier

---

## Warranty

1.If any product or part of a product manufactured by Powerful4x4 Pty Ltd is found to be defective during a period of 12 months from date of purchase, Powerful 4x4 Shall repair (at the discretion of Powerful 4x4) the defective product or part.

2.Powerful 4x4 Pty Ltd does not warrant the products manufactured by it comply with the laws of the locality (May differ from State to state) where those products are purchased or used. It is the sole responsibility of the purchaser to ascertain whether products being purchased, or affixation of those products to any other object, comply with the local laws.

3.Except to the extent described in the warranty, Powerful 4x4 shall not be liable for any other claims, including claims arising from incorrect fitment, product or vehicle modification, faulty design, the use of the product on any indirect special or consequential damage or injury to any person, company or other entity.

4.Any Modification or alteration to any product manufactured by powerful 4x4 Pty Ltd to enable fitment in conjunction with other vehicle accessories or modifications will void warranty claims.

Please do not hesitate to contact us if you need any help with fitting of the bar  
[1300 554 923](tel:1300554923)

FROM EVERYONE AT POWERFUL4X4 WE HOPE YOU ENJOY YOUR NEW PREMIUM SERIES  
BULBAR AND WOULD APPRECIATE ANY FEEDBACK AND PHOTOS

PLEASE EMAIL YOUR PHOTOS & FEEDBACK TO

[sales@powerful4x4.com.au](mailto:sales@powerful4x4.com.au)

UNLESS OTHERWISE REQUESTED, SOME OF YOUR COMMENTS & PHOTOS MAY BE USED  
ON OUR WEBSITE OR PRINT MEDIA

PLEASE NOTE: Please check in your local state as to legislation with regards to adding accessories to your vehicle. Some products sold may be for off road use only. This responsibility lies with the owner of the vehicle.